

Current-awareness alerts (SMARTracker) in CAS REGISTRYSM and CAplusSM

SMARTracker is a powerful and convenient crossfile current-awareness option to let you monitor the latest CAplus references to a REGISTRY substance or a class of substances. SMARTracker provides automatic current-awareness chemical structure access to CAplus bibliographic records.

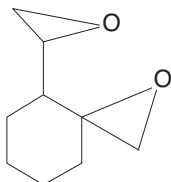
For example, with SMARTracker, you can:

- Monitor new patents on the therapeutic uses of substances with a common structure
- Monitor new literature on biosynthetic preparation of proteins containing a specified sequence of amino acids

SMARTracker automatically searches REGISTRY to find substances that match your substance query. It then automatically searches for new bibliographic references to new or previously found REGISTRY substances. You may choose the frequency of the search - either weekly or biweekly.

Setting up a new SMARTracker alert

Monitor new references on the preparation of ovalicin derivatives with the following substructure:



- 1 Enter REGISTRY. Upload or create a structure query (L1).
- 2 Conduct a full (or sample) substructure search.
- 3 Enter CAPlus.
- 4 Search the REGISTRY answer set (L2) in CAPlus combined with any bibliographic, indexing, or subject terms.
- 5 Enter the databases for SMARTracker.
- 6 Enter SMART to create a current-awareness alert.
- 7 Enter the query L-number (L3).
- 8 Answer the remaining prompts.

```

=> FILE REGISTRY
L1      STRUCTURE UPLOADED

=> S L1 SSS FULL
L2      756 SEA SSS FUL L1

=> FILE CAPLUS

=> S L2/PREP
L3      169 L2/PREP

=> FILE REGISTRY CAPLUS

=> SMART
      SMARTracker INITIATED

ENTER QUERY L# FOR SDI REQUEST OR (END):L3
ENTER UPDATE FIELD CODE (UP) OR ?:.
ENTER SDI REQUEST NAME, (AA240/S), OR END:.
ENTER COST CENTER (NONE) OR NONE:.
ENTER TYPE OF SEARCH (SSS), CSS, FAMILY, OR EXACT:SSS
ENTER TITLE (NONE):OVALICINS
ENTER METHOD OF DELIVERY (OFFLINE), ONLINE, OR
      EMAIL:ONLINE
ELIMINATE PREVIOUSLY SEEN ANSWERS WITH EACH SDI RUN?
      Y/(N):Y
HIGHLIGHT HIT TERMS? (Y)/N:N
ENTER SDI RUN FREQUENCY - (WEEKLY), BIWEEKLY, OR
      ? :WEEKLY
ENTER SDI EXPIRATION DATE 'YYYYMMDD' OR (NONE):.
QUERY L3 HAS BEEN SAVED AS SDI REQUEST 'AA240/S'

```

Modifying options for an existing SMARTracker alert

Change the delivery frequency of results for the METALLOCENE SMARTracker from biweekly to weekly.

1 Display a list of your alerts with SAVED/S.

2 Enter the databases in which the SMARTracker was created.

3 Enter SMART EDIT.

Line numbers are assigned to each parameter of the SMARTracker.

4 Enter the line number for the parameter to be changed.

5 Save the changes.

```

=> FILE HOME

=> D SAVED/S
NAME                CREATED          NOTES/TITLE
-----
METALLOCENE/S      21 MAR 2008    SDI REQUEST FOR CAPLUS
                  FROM REGISTRY

=> FILE REGISTRY CAPLUS

=> SMART EDIT
SMARTracker INITIATED

ENTER SDI NAME TO BE EDITED OR (END):METALLOCENE/S
PARAMETER
-----
SDI Name and Creation Date  METALLOCENE/S    21 MAR
                             2008
      .
      .
      .
5 Duplicate Elimination    YES
6 SDI Run Frequency        BIWEEKLY
7 SDI Expiration Date      NOT SPECIFIED
-----
L6  QUE  ABB=ON  PLU=ON  ZIRCONOCENE OR
      COBALTOCENE
L7  QUE  ABB=ON  PLU=ON  L6/CAT
ENTER LINE NUMBER(S) FOR CHANGE, END, OR (?):6
ENTER SDI RUN FREQUENCY - (WEEKLY), BIWEEKLY, OR
?:WEEKLY
PARAMETER                SETTING
-----
SDI Name and Creation Date  METALLOCENE/S    21 MAR
                             2008
      .
      .
      .
6 SDI Run Frequency        WEEKLY
7 SDI Expiration Date      NOT SPECIFIED
-----
L6  QUE  ABB=ON  PLU=ON  ZIRCONOCENE OR
      COBALTOCENE
L7  QUE  ABB=ON  PLU=ON  L6/CAT
ENTER LINE NUMBER(S) FOR CHANGE, END, OR (?):END
SAVE THE CHANGES? (Y)/N:Y
SDI REQUEST 'METALLOCENE/S' HAS BEEN EDITED

```

Replacing the search profile for an existing SMARTracker alert

Replace the search profile for the METALLOCENE SMARTracker.

1 Conduct new searches in REGISTRY and CAPLUS.

2 Enter the databases for the SMARTracker.

3 Enter SMART, the query L-number, and the name for the SMARTracker to be modified.

4 Replace the SMARTracker definition.

```

=> FILE REGISTRY
=> S ZIRCONOCENE OR COBALTOCENE
L1          531 ZIRCONOCENE OR COBALTOCENE

=> FILE CAPLUS

=> S L1 AND PATENT/DT
L2          1722 L1 AND PATENT/DT

=> FILE REGISTRY CAPLUS

=> SMART
    SMARTracker INITIATED

ENTER QUERY L# FOR SDI REQUEST OR (END):L2
ENTER UPDATE FIELD CODE (UP) OR ?:.
ENTER SDI REQUEST NAME, (AA241/S), OR END:METALLOCENE/S
'METALLOCENE/S' IN USE
REPLACE SDI DEFINITION? Y/(N):Y
ENTER COST CENTER (NONE) OR NONE:.
ENTER TITLE (NONE):.
ENTER METHOD OF DELIVERY (OFFLINE), ONLINE, OR
    EMAIL:ONLINE
ELIMINATE PREVIOUSLY SEEN ANSWERS WITH EACH SDI RUN?
    Y/(N):Y
HIGHLIGHT HIT TERMS? (Y)/N:N
ENTER SDI RUN FREQUENCY - (WEEKLY), BIWEEKLY, OR
    ?:WEEKLY
ENTER SDI EXPIRATION DATE 'YYYYMMDD' OR (NONE):.
QUERY L2 HAS BEEN SAVED AS SDI REQUEST 'METALLOCENE/S'
  
```

For more information

Enter HELP SDI at an arrow prompt.



A division of the
American Chemical Society

June 2008

CAS Customer Care
Phone: 800-753-4227 (North America)
614-447-3700 (worldwide)
Fax: 614-447-3751
E-mail: help@cas.org
Internet: www.cas.org